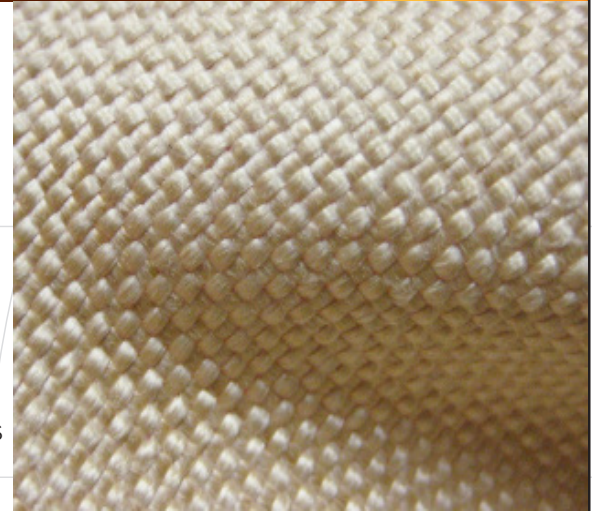




# ENVIRONMENTAL PROTECTION PRODUCTS AND THERMAL BARRIERS For A Green World

## HYTEX® 1000 - 2025 PREMIUM WL

HYTEX® 1000 - 2025 PREMIUM WL is a heavy weight, plain weave fiberglass fabric with an acrylic weavelock coating. Designed to greatly reduce fraying during the cutting and sewing process, the weavelock coating also improves air quality by reducing the amount of airborne fibers. Widely used for the fabrication of insulation pads, this fabric is excellent for use in a variety of thermal insulation products such as pipe wrapping, turbine blankets, engine exhaust covers, and insulation blankets.



### AVERAGE PHYSICAL PROPERTIES

Base Fabric, weave	E-Glass Plain Weave
Yarn Size	ECG 37 X ECG 37 (warp x fill)
Finish	Acrylic coating
Weight, oz/sy, nominal	18
Thickness, inches, nominal	0.030
Temperature Limit	
Continuous	1000°F • 538°C
Intermittent	1200°F • 648°C
Softening Point	1350°F • 732°C
Melting Point	2050°F • 1121°C
Break Strength, lb./in., minimum	200 x 100, warp x fill
Effect on heat, 75% tensile strength	650°F • 343°C
Width, inches	61, +/- 3%
Packaging, LY/Roll	50 LY
Manufactured in accordance with:	MIL-Y-1140 • MIL-I-24244 • ASTM D1777 • ASTM D3774 • ASTM D578 • USCG 164.009

Tolerance is +/- 10% unless otherwise stated.

The technical data presented herein are indicative of representative properties and are intended as a specification guide only. No warranties are expressed or implied as application conditions are beyond our control.

Rev.1.5-20.2019

Mid-Mountain Materials, Inc. • Telephone (800) 382-2208 • (206) 762-7600 • Fax (206) 762-7694  
5602 - 2nd Avenue South • PO Box 80266 • Seattle, WA 98108 USA  
info@mid-mountain.com • www.mid-mountain.com